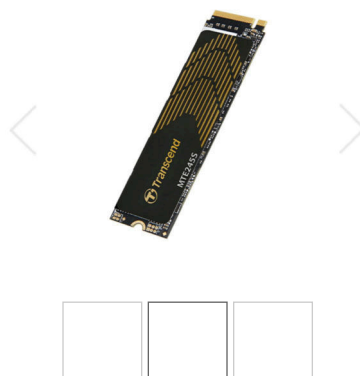


PCIe M.2 SSDs



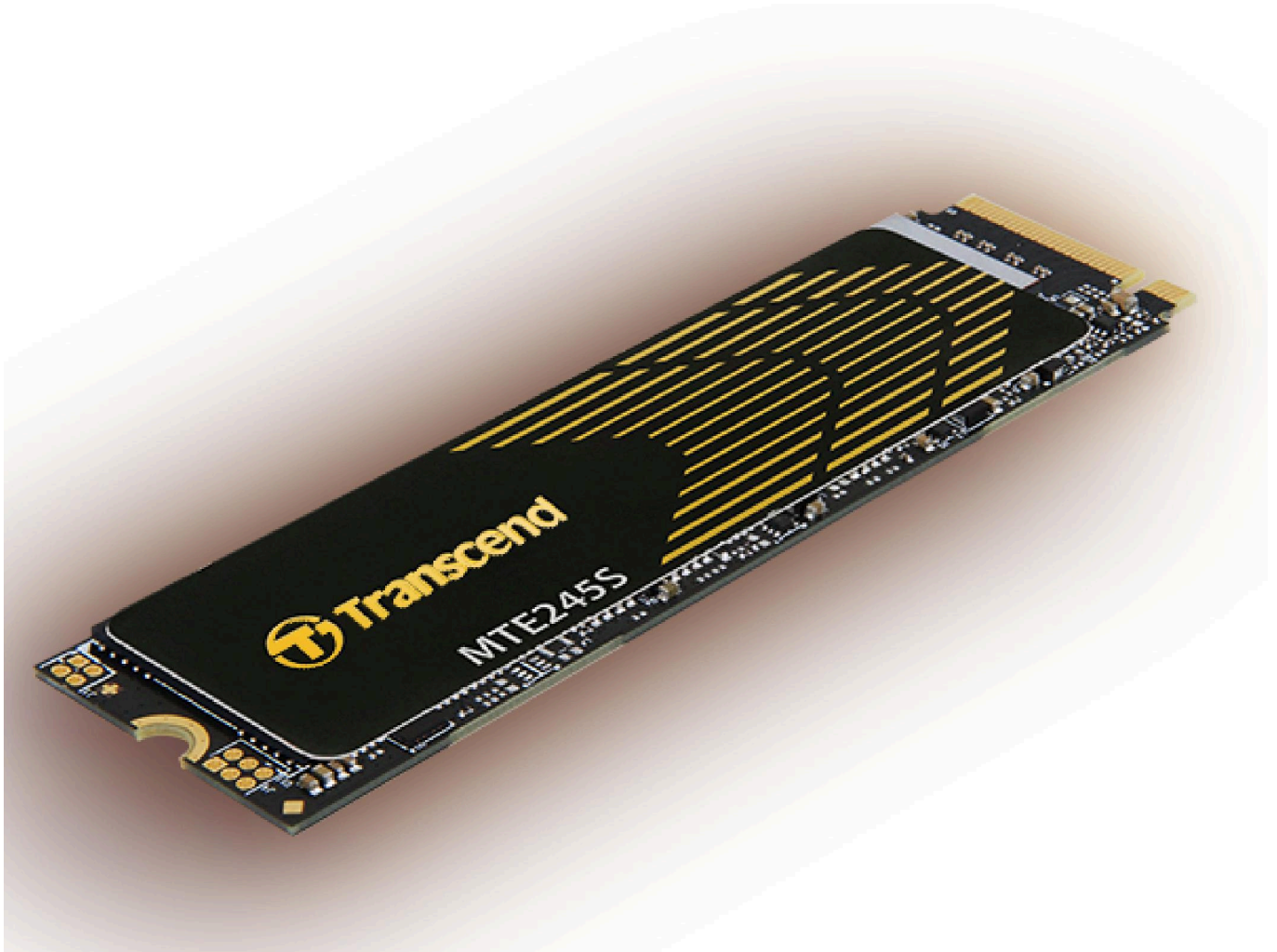
PCIe SSD 245S

Exhibiting more than just ultra-fast speed, Transcend's PCIe SSD 245S delivers unbridled performance, low latency, and high stability for advanced video editors, gamers, and software engineers. Built with the PCI Express® Gen 4 x4 interface, 3D NAND flash, and a multi-channel controller, Transcend's PCIe SSD 245S means power in the palm of your hand.

Superior Performance That Meets Your Needs

Transcend's PCIe SSD 245S complies with the latest NVMe 1.4 standard, supporting the PCIe™ Gen4 x4 interface. Its multi-channel controller delivers sequential R/W speeds of up to 5,300/4,600 MB/s, and IOPS up to 630K, delivering captivating performance and response times for desktops and laptops like you've never seen before!

Note: Performance is based on the CrystalDiskMark v8.0.4.



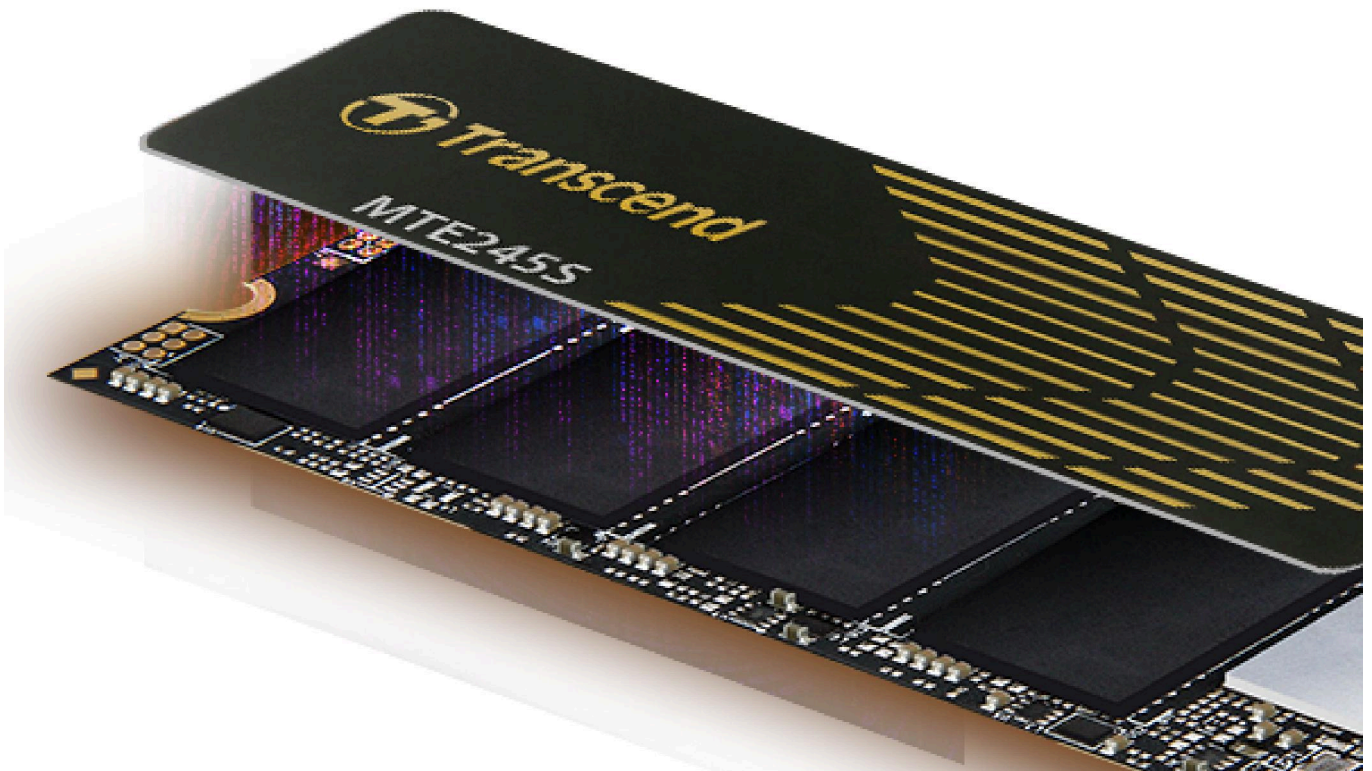
Level Up With PCIe 4.0

Transcend's PCIe SSD 245S features the new PCIe 4.0 specification and is downwards compatible with PCIe 3.0. PCIe 4.0 unleashes a higher transfer speed for your computer and guarantees lower system latency. For content creators and gamers, this means a more seamless and immersive experience!



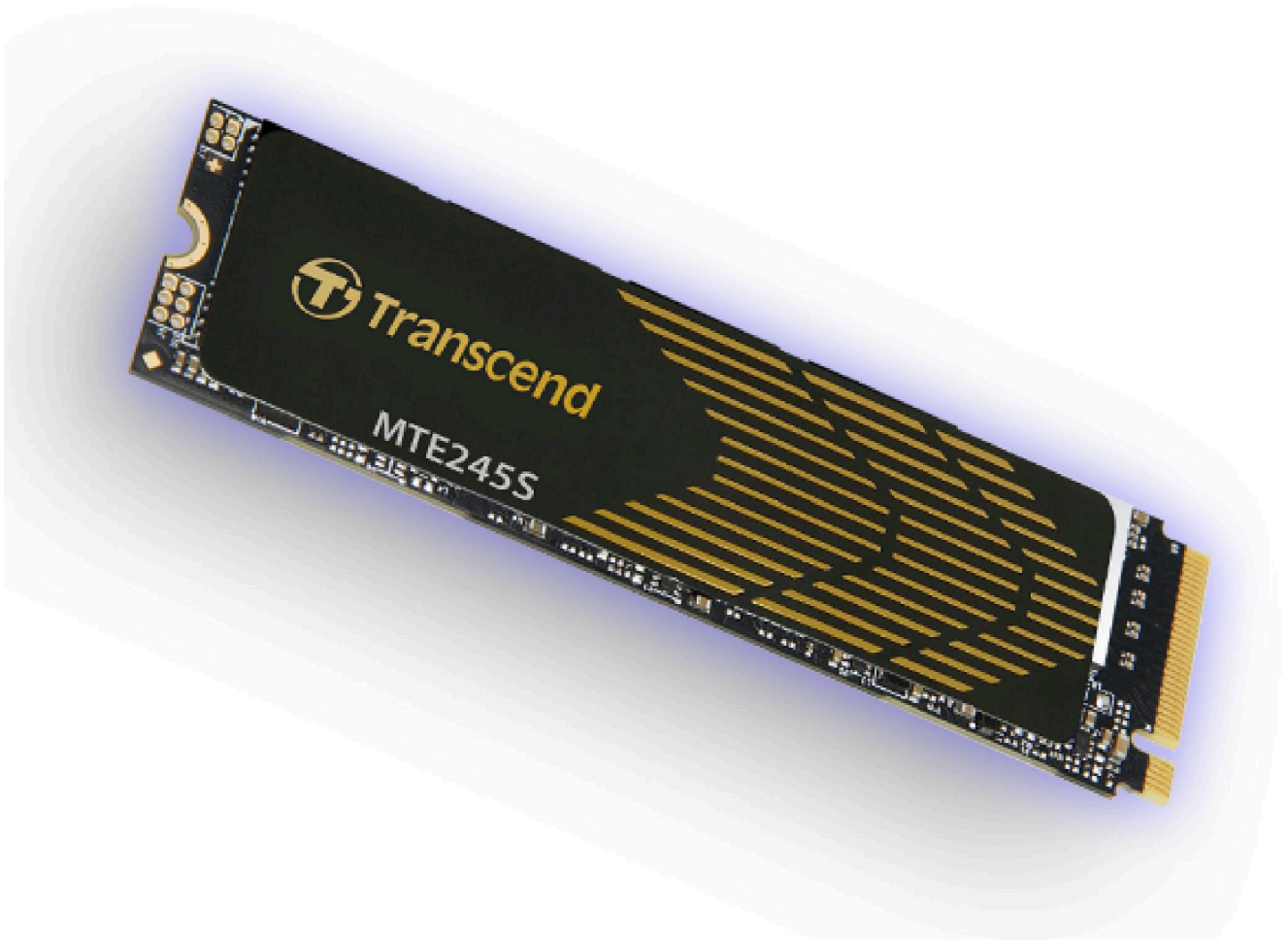
As Cool As Always

Transcend's PCIe SSD 245S has an integrated ultra-thin graphene heatsink to improve heat dissipation. The high conductivity of graphene cools the system down quickly, ensuring stable device performance and reliability.



Low Power Consumption

Transcend's PCIe SSD 245S comes in an M.2 2280 form factor. Its single-sided design is perfect for desktops, laptops, and ultrabooks! The low-power design makes PCIe performance possible with the best power efficiency.



A Slim And Versatile Behemoth

Despite its slim design, Transcend's PCIe SSD 245S provides up to 4TB of storage capacity, making it a fantastic storage option for gamers, video editors, software engineers, and other tech-savvy users.



Better Endurance, Higher Reliability

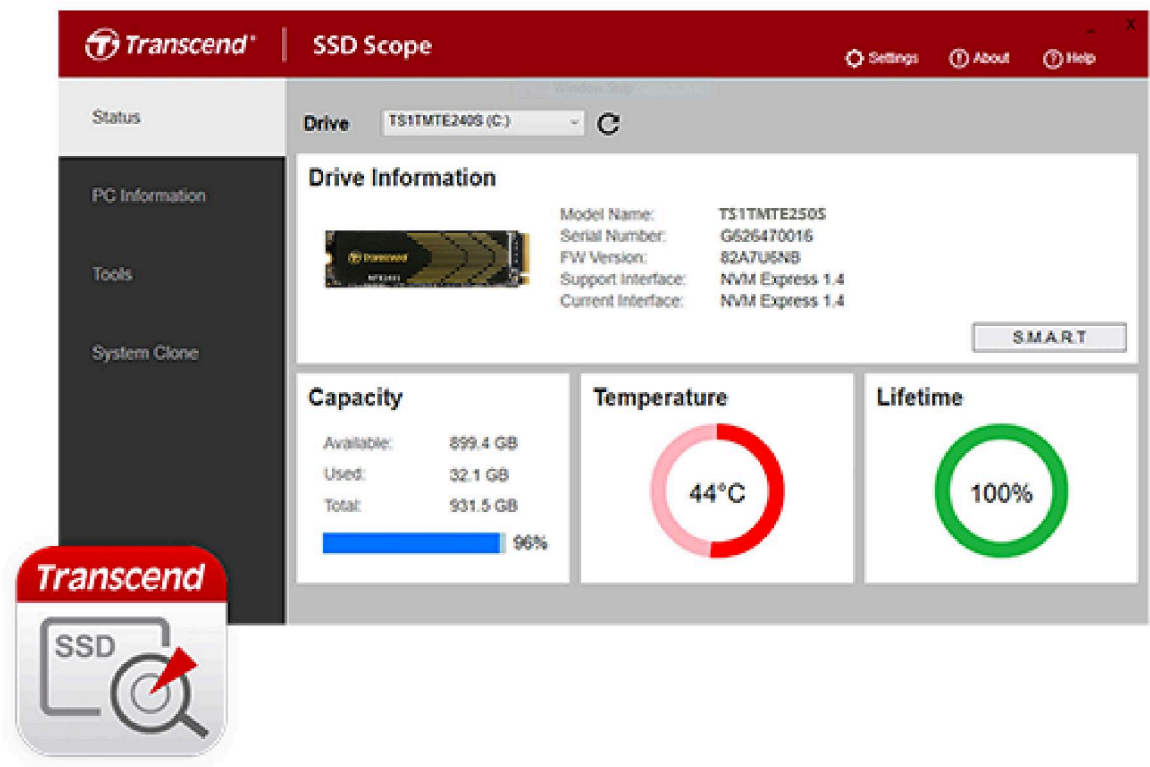
Transcend's PCIe SSD 245S is engineered with LDPC (Low-Density Parity Check) coding, a powerful ECC algorithm, to help keep data secure. Engineered with a dynamic thermal throttling mechanism, Transcend's PCIe SSD 245S delivers superior endurance and stability for high-end applications.



SSD Scope Software

Transcend SSD Scope is an advanced, user-friendly software tool that makes it easy to ensure your Transcend SSD remains healthy, and continues to run efficiently by optimizing the performance of your drive.

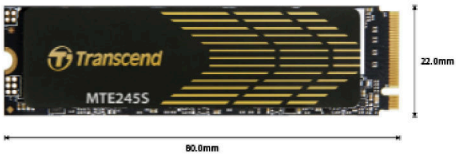
[Learn more \(/support/software/ssd-scope\)](https://support.transcend-info.com/software/ssd-scope)



Quality Guaranteed

Transcend's PCIe SSD 245S is covered by a five-year limited warranty. To ensure the utmost level of quality, Transcend SSDs undergo rigorous testing at all stages of production, including tests for vibration, temperature and humidity, speed, and functionality.

Specifications



Appearance

Dimensions	Single-sided 80 mm x 22 mm x 2.42 mm (3.15" x 0.87" x 0.1")
Weight	9 g (0.35 oz)
Type	M.2 2280

Interface

Bus Interface	NVMe PCIe Gen4 x4
---------------	-------------------

Storage

Flash Type	3D NAND flash
Capacity	250GB / 500 GB / 1 TB / 2 TB / 4 TB

Operating Environment

Operating Temperature	0°C (32°F) ~ 70°C (158°F)
Operating Voltage	3.3V±5%

Performance

Sequential Read/Write (CrystalDiskMark)	4 TB	Up to 5,300/4,000 MB/s
	2 TB	Up to 5,300/4,600 MB/s
	1 TB	Up to 5,300/4,600 MB/s
	500 GB	Up to 4,800/4,000 MB/s
	250 GB	Up to 3,200/1,800 MB/s
4K Random Read/Write (IOMeter)	4 TB	Up to 390,000/630,000 IOPS
	2 TB	Up to 480,000/620,000 IOPS
	1 TB	Up to 500,000/630,000 IOPS
	500 GB	Up to 300,000/600,000 IOPS
	250 GB	Up to 100,000/390,000 IOPS
Terabytes Written (TBW)	4 TB	2400 TBW
	2 TB	1200 TBW
	1 TB	600 TBW
	500 GB	300 TBW
	250 GB	150 TBW
Mean Time Between Failures (MTBF)	2,000,000 hour(s)	
Drive Writes Per Day (DWPD)	0.33 (5 yrs)	
Note	<ul style="list-style-type: none">Speed may vary due to host hardware, software, usage, and storage capacity.The workload used to rate DWPD may be different from your actual workload, which may vary due to host hardware, software, usage, and storage capacity.Some motherboards only provide PCIe x2 connections for the M.2 slot, creating a bottleneck on even the fastest drives.	

Warranty

Certificate	CE / UKCA / FCC / BSMI / KC / RCM
Warranty	Five-year Limited Warranty
Warranty Policy	<ul style="list-style-type: none">Please click here (/Warranty) for more information about the Transcend Warranty Policy.Warranty does not apply when SSD Scope's lifetime indicator displays 0% within the warranty coverage.Removal of heatsink may cause damage to the SSD not covered under Transcend's warranty policy.

System Requirement

Operating System	<ul style="list-style-type: none">Microsoft Windows 7 or laterLinux Kernel 2.6.31 or later
Note	Please make sure that your computer has a M.2 slot.

Technology

S.M.A.R.T.	✓
Advanced Garbage Collection	✓
RAID Engine	✓
LDPC Coding	✓
DRAM Cache	-

Order Information

250GB

TS250GMTE245S

500GB

TS500GMTE245S

1TB

TS1TMTE245S

2TB

TS2TMTE245S

4TB

TS4TMTE245S



Product Sheet

(https://CDN.transcend-info.com/products/images/modelpic/1310/Transcend-MTE245S_202310.pdf)



Support

(</support/product/internal-ssd/mte245s>)

Consumer Products

- [Internal SSDs \(/product/internal-ssd\)](/product/internal-ssd)
- [Portable SSDs \(/product/portable-ssd\)](/product/portable-ssd)
- [External Hard Drives \(/product/external-hard-drive\)](/product/external-hard-drive)
- [Personal Cloud Storage \(/product/personal-cloud\)](/product/personal-cloud)
- [Dashcams \(/product/dashcam\)](/product/dashcam)
- [Body Cameras \(/product/body-camera\)](/product/body-camera)
- [Memory Cards \(/product/memory-card\)](/product/memory-card)
- [USB Flash Drives \(/product/usb\)](/product/usb)
- [DRAM Modules \(/product/dram-module\)](/product/dram-module)
- [Card Readers, DVD Writers & Accessories \(/product/card-reader-accessory\)](/product/card-reader-accessory)
- [Customized Solutions \(/products/oem.aspx\)](/products/oem.aspx)

Embedded Solutions

- [Embedded SSD Solutions \(/Embedded/Product/ssd\)](/Embedded/Product/ssd)
- [Embedded Flash Solutions \(/Embedded/Product/flash\)](/Embedded/Product/flash)
- [Embedded Memory Cards \(/Embedded/Product/memory-cards\)](/Embedded/Product/memory-cards)
- [Embedded DRAM Modules \(/Embedded/Product/modules\)](/Embedded/Product/modules)
- [Technologies \(/Embedded/Technologies\)](/Embedded/Technologies)
- [Applications \(/Embedded/Applications\)](/Embedded/Applications)
- [Software Solutions \(/Embedded/Software\)](/Embedded/Software)
- [Resource Download \(/embedded/download\)](/embedded/download)

Support

- [Product Support \(/support/service\)](/support/service)
- [Software Download \(/support/software\)](/support/software)
- [Compatibility \(/support/compatibility\)](/support/compatibility)
- [Warranty Policy \(/warranty\)](/warranty)
- [Warranty Check \(/support/verification\)](/support/verification)
- [Where to Buy \(/support/buy\)](/support/buy)
- [Partner Center \(/partnercenter/\)](/partnercenter/)

About Us

- [Company Profile \(/about/company-profile\)](/about/company-profile)
- [Advantage \(/about/advantage\)](/about/advantage)
- [Awards \(/about/awards\)](/about/awards)
- [Investor Relations \(/about/mir\)](/about/mir)
- [Shareholder Services \(/about/shareholder-services\)](/about/shareholder-services)
- [Sustainable Development \(/about/sustainable-development\)](/about/sustainable-development)
- [Social Responsibility \(/about/social-responsibility\)](/about/social-responsibility)
- [Press \(/about/press\)](/about/press)
- [Green Initiatives \(/about/green-initiatives\)](/about/green-initiatives)
- [Contact Us \(/support/contact\)](/support/contact)